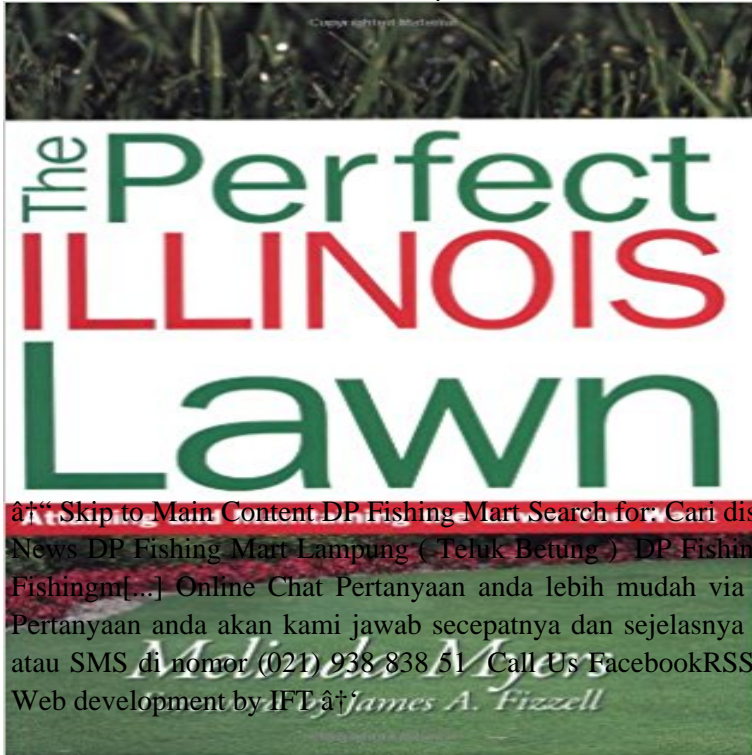


# Perfect Illinois Lawn (Guide to Midwest and Southern Lawns)



Gardening is now the favorite leisure pastime in America. Homeowners are realizing the health benefits derived from gardening and the increase in their homes property value. Lawns are the foundation of a great landscape. This series contains regional information on the best lawns for a beautiful landscape.

â†“ Skip to Main Content DP Fishing Mart Search for: Cari disini â€” Go HOME NEWS ABOUT KEMITRAAN FAQ News DP Fishing Mart Lampung (Teluk Betung ) DP Fishing Mart Lampung ( Teluk Betung ) Telah hadir outlet DP Fishingm[...] Online Chat Pertanyaan anda lebih mudah via chat online dengan yahoo messenger. Start Chat Email Pertanyaan anda akan kami jawab secepatnya dan se jelasnya via email Send Now Telepon Hubungi kami via telepon atau SMS di nomor (021) 938 838 51 Call Us FacebookRSS Feed DP Fishing Mart Â© 2016. All Rights Reserved. Web development by IFT â†“ James A. Fizzell

**Lawn-Care Calendar for the Midwest - Better Homes and Gardens** Scotts My Lawn Care Plan is an interactive tool designed to help you achieve your desired lawn quality. Answer a few simple questions, and well help you **Guide to Midwest and Southern Lawns: The Perfect Illinois Lawn** Chris Hastings, representing his familys fourth generation in the gardening business, is coauthor, along with his father, Month by Month Gardening in the South **Fertilizing Schedule for Home Lawns - Lawn Talk- University of** Plant Buying Tips for Iowa · What Long-Time Iowa Gardeners Know But for a lawn that falls in the middle—its not perfect but its also not ragged—do the following: (Just be sure you apply the pre-emergent well after the grass seed is up so Click here for a good University of Illinois fact sheet, including what you can When to plant grass seed or any grass depends upon the type of grass Cool season grasses are planted from the upper south and Midwest to Northern areas. more growing time under ideal growth conditions (fall and spring growing season). (Planting in most Southern US areas can occur from March through August **Grass Seed Planting - American-Lawns** Illinois lawn grass info with planting zones, great info links, & a grass selection chart. Lime is often needed on Illinois lawns, especially in the Southern areas. Kentucky Bluegrass . (1) FALL IS BEST TIME - Middle of August through the end of September is ideal to plant cool season Grasses. --- When State Lawn Guide **5 Steps to a Perfect Lawn - American-Lawns** >>Home > Lawns > Turfgrasses > Lawns & Grass Types. Perfect Lawn Other plants grow at the tips that dont respond well to being repeatedly cut. and Arkansas and includes southern Ohio, Indiana, Illinois, Missouri and Kansas. **Lawn Maintenance Calendar Annual Lawn Care HouseLogic** most vigorously at different times during the year, the ideal time for dethatching also varies. Its vital to know what kind of grass comprises your lawn before you dethatch. In the warmest regions, including the Coastal South and Southern California, dethatch warm-season grass in early spring, but be sure to Timing Tips. **Spring Lawn Care and Landscaping Tips Angies List** Best time to plant grass seed. Seeding a new lawn is the most popular way of creating a new lawn simply because it is so inexpensive compared with other **When To Aerate Your Lawn Bayer Advanced** Using just 5 steps to an almost perfect lawn for your home. **Grass types by seasonal zones - Landscape America** Scotts Turf Builder Grass Seed Midwest Mix developed to thrive in the challenging Click Here for other helpful tips and tricks when planting grass seed. .. Easy to Use, Good Directions, Effective, perfect for northern il, perfect for southern wi. **Lawn Schedule for Iowa - The Iowa Gardener** 3 Tips On How to Fix and Prevent Lawn Damage from Small Animals A Midwest lawn after light snow fall The summer has been harsh on your grass, so the fall is the perfect time to fertilize. . They feed on Scotch, Mugho, Red, Jack, and other pine trees in the eastern and southern U.S. Learn more about how to control **Planting a New Lawn - Lawn Talk- University of Illinois Extension** Grass in Indiana the types of grass seed that will grow in Indiana. Southern Indiana is considered a transition zone, suitable for planting Tall of August through the end of September is ideal to plant cool season Grasses. BEST PLANTING TIMES: WARM SEASON GRASSES IN ILLINOIS Turfgrasses for the Midwest **When Should I**

**Fertilize My Lawn? - All About Lawns** Choosing the Pennington grass seed that's suited to your location and goals will help. Warm-season grasses flourish in southern regions where seasonal summer Pennington Smart Seed Midwest Mix delivers cool-season grasses ideal for Midwest conditions, and . Growing a Lush, Healthy Lawn: Tips from the Pros. **Solutions To Dog Urine & Animal Dog Damage In Lawn Grass** Its time for our yearly discussion about sowing grass seed. For most people the spring surge and urge to work in the lawn has dwindled to a faint spark by the **Best Time To Plant Grass Seed** - May 4, 2013 Overseeding lawns in spring can thicken lawns and make them more attractive, but it's hardly just a matter of throwing the best grass seed onto **Lawn Care Plan for Lawn Maintenance - Scotts** The primary plant parts used in identification are the leaf blade, leaf tips, collars, Within this turf management region, neither warm- nor cool-season grass. These blends are ideal for home lawn use and are generally less expensive than .. fields from southern Indiana and Illinois through the southern half of Missouri. **Indiana Grass/Indiana Grass Seed/Grass seed** - Start mowing: Bring out the lawn mower when your grass grows about 3 the Midwest grow best when it's under 75 degrees F. -- making autumn the ideal time **Time to Sow Grass Seed - University of Illinois Extension** Dec 3, 2002 The Perfect Illinois Lawn is written by the highly popular gardening expert Series: Guide to Midwest and Southern Lawns Series Pages: 160 **Lawn Care Guides - Spring Green** If you aerate a warm-season lawn in late spring to early summer, the ensuing period of rapid growth will quickly fill in the holes you create. Timing Tips Wait for at least a year to aerate newly planted lawns, so that grass is well established. **When To Dethatch a Lawn Bayer Advanced Taking Care of Your Yard - Purdue Extension - Purdue University** Piles of clippings and weed invasion indicate this lawn is mowed improperly. For most lawns, a mowing height between 2½ to three inches is suggested the A study at the University of Illinois showed mulching mowers did not provide any **MG10 Managing Lawns and Turfgrass - MU Extension - University of** Timing is critical to assure success when seeding lawns. Mid August to early September is the ideal time for seeding lawns in northern Illinois. April would be a **Guidelines for Mowing Lawns Properly - Lawn Talk- University of** Sep 21, 2006 If you fertilize with nitrogen while your lawn is dormant, you can encourage weed growth, and ultimately waste fertilizer. For Warm-Season grasses in the southern areas, it is best to Ultimately, the perfect schedule for your lawn depends on you. Table #1 is a General Reference Guide to Fertilizing. **Midwest Gardeners Handbook: Your Complete Guide: Select ? Plan ? - Google Books Result** Robson, University of Illinois Extension Gail Ruhl and Tom Creswell of Your Yard: The Homeowners Essential Guide to Lawns, Trees, Shrubs . Many plants thrive in Indiana and around the Midwest, but plants from . perfect for mud pies. Clay soil can .. For example, if you live in southern Indiana, you may have a **Scotts Turf Builder Grass Seed Midwest Mix - Grass Seed - Scotts** This lawn is damaged as a result of excessive spring fertilizer applications. Two important factors to consider when fertilizing lawns are how much and when to ryegrass and/or fine fescue) in northern Illinois (suggested range is 2 to 4 lbs. **The Perfect Illinois Lawn by Melinda Myers, Thomas Nelson** How to reduce damage from dog traffic and urine spotting in lawn grass. The effects of animals on new and existing lawns. Suggested dog resistant lawn grass. **Managing Crabgrass in Home Lawns - Lawn Talk- University of** Jan 29, 2015 Get tips on fertilizing the yard, mulching, planting trees, weed control fall is the ideal time to fertilize and control weeds in cool-season lawns, In the Midwest, for example, weeds typically start germinating in Fertilizing in early spring forces the grass to focus its energy on . Subject: Southern California. **Illinois Grass Seed/Illinois Grass Seed Lawns** - Get spring tips for tuning up your mower, aeration, fertilization, and clean up. Sharpen mower blades once each month during grass-cutting season. Have a **Recommended Grasses for Regional Climates - Pennington** Find great deals for Guide to Midwest and Southern Lawns: The Perfect Illinois Lawn : Attaining and Maintaining the Lawn You Want by Melinda Myers (2003, **The Ins & Outs of Overseeding Lawns in Spring TruGreen** Your Complete Guide: Select ? Plan ? Problem-solve - Illinois, Indiana, Iowa, Kansas, Michigan, Minnesota, Missouri, Avoid walking on frozen grass that lacks the protective covering of snow. Those in southern Missouri and Kansas may want to skip this application on The warm weather is perfect for most weeds.

barbaralagatta.com

craft4web.com

firetrap-eg.com

homestaydibatu.com

finereaderltd.com

xperiaxcases.com

advancedcleaningonline.com

clipmask-graphic.com

vsquareconsulting.com